

# notre future université prend vie

Un modèle pionnier et unique en France  
Université Gustave Eiffel  
1<sup>er</sup> janvier 2020

**FUTURE**  
INVENTING THE CITY OF TOMORROW

UNIVERSITÉ  
— PARIS — EST



École d'architecture  
de la ville & des territoires  
à Marne-la-Vallée



**ENSG**  
Géomatique

**ESIEE**  
PARIS



**IFSTAR**

**UP**  
**EM**  
UNIVERSITÉ  
PARIS-EST  
MARNE-LA-VALLÉE

Our future university comes to life

Gustave Eiffel University, a pioneering and unique model in France, January 1, 2020

## Project ambition

- **Pooling our strengths** in training and research
- **Pursuing a common history** initiated more than 20 years ago
- Assert a common, distinctive strategy to **create better synergies** between our institutions.
- Ensure the **development** of our institutions over the long term
- Increase our **international visibility**
- Train young people and workers at all levels, and contribute to a **higher level of qualification for all**
- Provide **scientific insights** to our socio-economic partners, our supervisory bodies and society as a whole

## The objective

Create a unique, atypical and pioneering university,  
the first national institution that brings together :

A research institution

A university

A school of architecture

Three engineering schools

École d'architecture  
de la ville & des territoires  
à Marne-la-Vallée



ENSG  
Géomatique

ESIEE  
PARIS



UP  
EM  
UNIVERSITÉ  
PARIS-EST  
MARNE-LA-VALLÉE

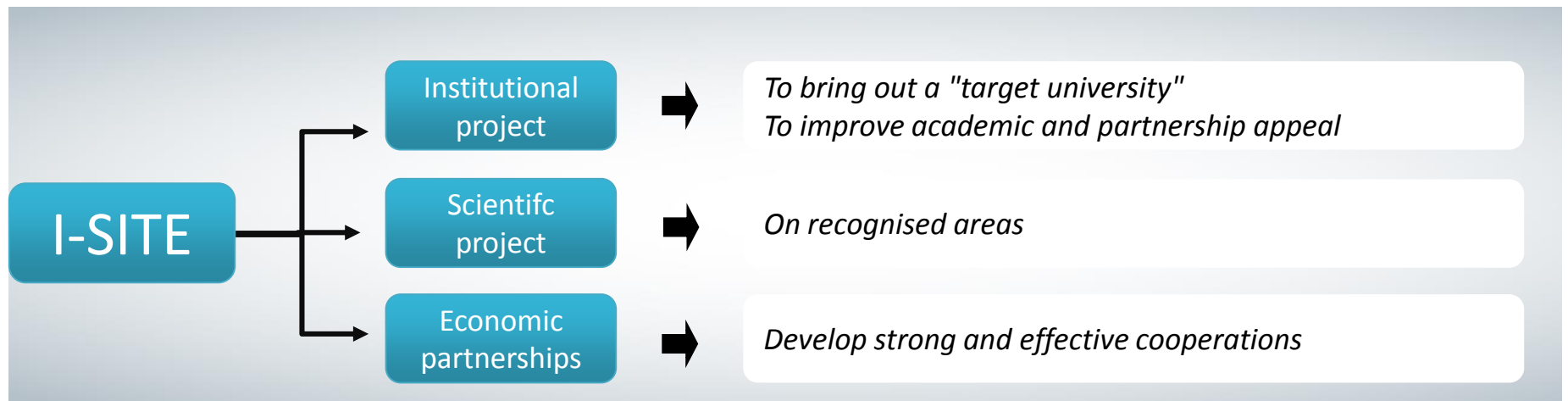


# A project made possible through the Program Investments for the Future (PIA)

**I-Site certification** "Initiatives - Science - Innovation - Territories - Economy" (February 2017) with recognition of the site on the theme of cities

**Non-consumable capital allocation:** €280 million (annual cash flow of €9 million, including €5.7 million to implement actions)

**Our certification must be confirmed at 4 years (2021) before the jury:  
Effective creation of Gustave Eiffel University  
= sustainable funding**





## Government commitment

Validation in principle by the Government in March 2017 (certification by the PIA)

Ordinance No. 2018-1131 of 12 December 2018 on the **experimentation** of new means of bringing higher education and research institutions closer together, clustering or merging them

**which allows:**

**the creation of an experimental public institution, by decree, after consulting the National Council for Higher Education and Research**

"The decree establishing it approves its statutes after they have first been approved by each of its constituent institutions. »



## Commitment of authorities and institutions

**Six institutions** involved as founding members of Gustave Eiffel University. Discussions are ongoing to refine school-specific integration modalities within the future university.

**UPEM:** Support from the Ministry of Higher Education, Research and Innovation

**IFSTTAR:** Confirmation from the Ministry for an Ecological and Solidary Transition (letter from the Minister dated 19/11/2018)

The authorities of the 4 schools are still favourable:

- **EAVT** — Ministry of Culture
- **EIVP** — City of Paris
- **ENSG** — IGN and Ministry for an Ecological and Solidary Transition
- **ESIEE Paris** — Chamber of Commerce and Industry of Paris Ile-de-France Region



# The University in numbers

## A pluri-disciplinary university of human scale

### **17 000 students**

8 300 undergraduate students (DUT, bachelor's degrees)

3 500 master students

4 000 engineering students

700 architecture students

500 PhD students

### **2 300 staff**

200 teachers

400 teacher-researchers

550 researchers

1 150 administrative and technical staff



## 16 training components

*Schools, faculties, training units, institutes....  
with unique prerogatives*

École d'Ingénierie des Services

École d'Urbanisme de Paris

École des Ingénieurs de la Ville de Paris

École des Langues et Civilisations

École des Lettres, Arts, Communication et Technologie

École des Mathématiques

École des Sciences Appliquées

École des Sciences Économiques et de Gestion

École des Sciences et Techniques des Activités Physiques et Sportives

École des Sciences Humaines et Sociales

École Gaspard Monge d'Informatique et d'électronique

École Nationale des Sciences Géographiques

École d'architecture de la Ville & des Territoires

ESIEE Paris

École Supérieure d'Ingénieurs Paris-Est

Institut Universitaire de Technologie





## 22 Research components

*Evaluated by Hcéres*

**ACP** (Analyse Comparée des Pouvoirs, EA 3350, UPEM)

**AME** (Aménagement, Mobilités et Environnement, Ifsttar)

**AUSSER** (Architecture Urbanisme Société : Savoir Enseignement Recherche, UMR 3329 CNRS, EAVT et 3 autres écoles d'architecture)

**COSYS** (Composants et Systèmes, Ifsttar)

**DICEN** (Dispositifs d'Information et de Communication à l'Ere Numérique Paris Ile de France, EA 7339, UPEM, U Paris-Nanterre, CNAM)

**ERUDITE** (Équipe de Recherche sur l'Utilisation des Données Individuelles en lien avec la Théorie Economique, EA 437, UPEM, UPEC)

**GERS** (Géotechnique, Environnement, Risques naturels et Sciences de la terre, Ifsttar)

**ESYCOM** (Laboratoire Electronique, Systèmes de Communication et Microsystèmes, FRE CNRS, UPEM, ESIEE Paris, CNAM)

**IRG** (Institut de Recherche en Gestion, EA 2354, UPEM, UPEC)

**LAB'URBA** (Laboratoire d'Urbanisme, EA 3482, EIVP, UPEM, UPEC)

**LAMA** (Laboratoire Analyse et Mathématiques Appliquées, UMR 8050 CNRS, UPEM, UPEC)

**LATTS** (Laboratoire Techniques, Territoires et Sociétés, UMR 8134 CNRS, UPEM, ENPC)

**LGE** (Laboratoire Géomatériaux et Environnement, EA 4508, UPEM)

**LIPHA-PE** (Laboratoire Interdisciplinaire d'étude du Politique Hannah Arendt - Paris-Est, EA 7373, UPEM, UPEC)

**LIGM** (Laboratoire d'Informatique Gaspard Monge, UMR 8049 CNRS, UPEM, ESIEE, ENPC)

**LISAA** (Littératures, Savoirs et Arts, EA 4120, UPEM)

**LISIS** (Laboratoire Interdisciplinaire Sciences Innovations Sociétés, UMR 9003, CNRS, INRA, UPEM, ESIEE)

**LVMT** (Laboratoire Ville, Mobilité, Transports, UMR-T 9403, Ifsttar, UPEM, ENPC)

**MAST** (Matériaux et Structures, Ifsttar)

**MSME** (Laboratoire Modélisation et Simulation Multi-Échelle, UMR 8208 CNRS, UPEM, UPEC)

**TS2** (Transport Santé Sécurité, Ifsttar)

**LASTIG** UMR Information Géographique pour la Ville et les Territoires Durables (IGN, UPEM, EIVP)

# The main orientations of Gustave Eiffel University: public service missions

## Training:

- Provide training for **students from the territory, at the local and national levels**, with an **international dynamic**
- Ensure the **vocational** dimension of training, notably through apprenticeship and lifelong learning
- Assert the importance of training **by and for research**

## Research :

- Build on existing strengths acknowledged through the I-Site FUTURE and develop **transverse approaches**
- Promote the **diversity of research** in all the disciplines represented at Gustave Eiffel University
- Offer the **widest range of research activities**: fundamental research, applied research, public policy support, expertise, science open to society

# Gustave Eiffel University's assets

## Expertise, Skills & Staff



### Your Questions:

- A variety of statuses, all maintained
- Safeguarded working conditions
- New opportunities for internal mobility
- Access to a wider range of internal training opportunities
- Support for change at the heart of the concerns of institutional heads
- Maintaining research and training areas beyond City-related topics
- Sustaining the operational agility of component institutions

# Which set-up for Gustave Eiffel University?

**Action**

EXECUTIVE BODIES

**Deliberation / Decision**

DELIBERATIVE BODIES

**Dialog / Consultations**

CONSULTATIVE BODIES

**Change**

TRANVERSE and INNOVATIVE PROJECTS

STATUTORY BODIES

# Statutory consultative bodies

Career and working conditions matters

## Committees responsible for collective matters

Technical  
committee

Health, Safety and  
Working Conditions  
Committee

Locale  
variations

## Joint consultative committees handling individual cases

National, regional and  
permanent staff joint  
committees relating to  
each category of staff

Joint committees for  
non-permanent staff

Closed  
Academic  
Council

■ ■ ■

# Governance overview

## Executive bodies

Ethics committee

## Consultative bodies

## Deliberative bodies

Transverse and Innovative projects

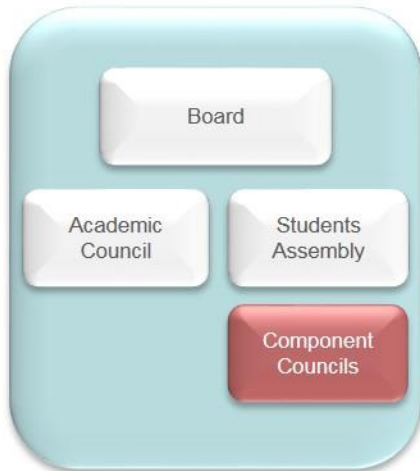
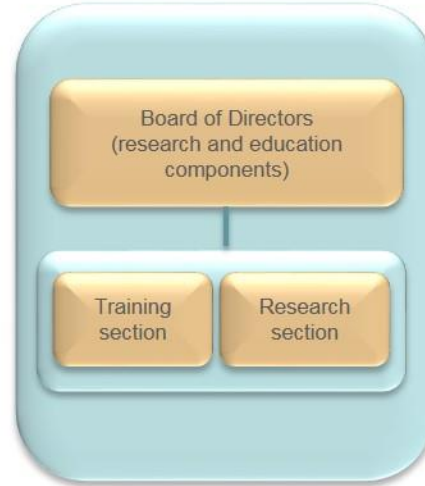
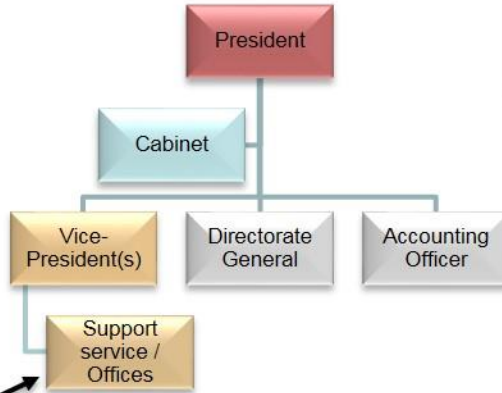
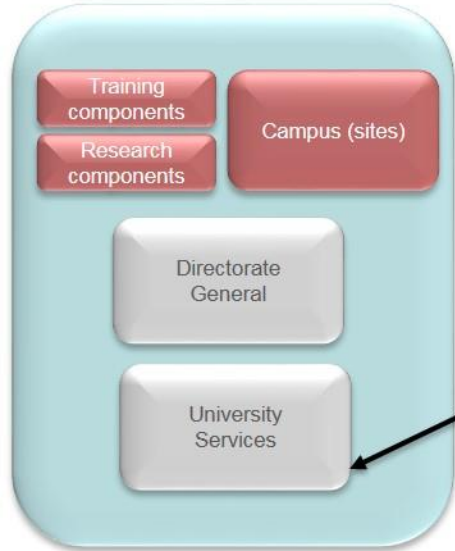
I-Site FUTURE

NCU

Internal projects

Labex

...



## Project implementation: methodology

- Within the **steering and operational committees**, **six institutions** agree on a **new governance model** that combines the operations of each institution
- **Exchanges** in each institution (exchange and information meetings) and at inter-union meetings between institutions
- Each **task** is handled according to a schedule that fits its own complexity and within the framework of a **dedicated working group**...
- ... and successfully completed thanks to the **significant commitment of the staff** of each institution



# Working Groups on strategic components of I-Site and Gustave Eiffel University

## Thematic components

- Research (Serge Piperno)
- International (Agnès Jullien)
- Training (Venceslas Biri)
- Student life / campus (Karine Marot & Mathieu Delorme)
- Partnerships (Dominique Perrin & Muriel Jougleux)

## Gouvernance components

- Cross-site relations (Marc Tassone)
- Organisation and Statutes (Hélène Jacquot-Guimbal & Frédéric Moret)
  - Professional working groups





# Professional working groups

- **Organisational consistency and coordination among services**, led by par Frédéric Moret (UPEM)
  - **Budget/accounting**, led by Anne-Marie Le Guern (IFSTTAR)
  - **Property/real estate/security**, co-operated by Philippe Demange (UPEM) & Philippe Avril (IFSTTAR)
  - **Scientific and technical documentation/information**, co-operated by Christine Stotzenbach (UPEM) & Sylvie Legret (IFSTTAR)
  - **Human Ressources**, co-operated by Claire Corman (UPEM) & Catherine Odin (IFSTTAR)
  - **Information systems, scientific computing and calculation capabilities**, led by Mourad Ben Hadj (UPEM)
  - **Student Curriculum/schooling**, co-operated by Peymaneh Hanrion (ESIEE Paris) & Aïni Hannachi (UPEM)
  - **Communication**, co-operated by Sandrine Diago (UPEM) & Claire Spilmann (ESIEE)



# Timeline

## Framework

Preparation of the Statutes for April/May 2019

Approval of the Statutes before the summer by all necessary bodies, with extraordinary Board meeting according to the calendars of the institutions

Publication of the Decree in the summer of 2019

Launching on 1 January 2020

## Organisation

Feedback from professional working groups by spring 2019

Description of the operating principles of the entities among themselves by May 2019

First descriptions of the organization summer 2019, presentation in GA

Approval by the institutions' supervisory authorities in autumn 2019 for implementation as of 1 January 2020



# Monitoring project work internal communication

Gustave Eiffel University **website** (newsletters, FAQs, working groups' Terms of Reference), calendar and agenda of interunion meetings, and mutual knowledge seminars...)

Since November 2018, transmission of **briefs after each Steering Committee meeting**, in addition to newsletters

## **Intranets**

**Regular exchanges** throughout the year, in addition to General Assemblies

**Internal communication campaign "Our university comes to life"** common to all institutions since January 15



# Continuing project work

## external communication

Staff and students **vote** to choose Gustave Eiffel University's future logo from January 28 to February 8

<http://univ-gustave-eiffel.fr/mise-en-oeuvre-du-projet/votation-logo-de-luniversite/>

Work on **image transfer(s)**, including internationally, as well as on **signatures**



## Must-Have links

**[univ-gustave-eiffel.fr](http://univ-gustave-eiffel.fr)**

**[future-isite.fr](http://future-isite.fr)**

# notre future université prend vie

Un modèle pionnier et unique en France  
Université Gustave Eiffel  
1<sup>er</sup> janvier 2020

**FUTURE**  
INVENTING THE CITY OF TOMORROW

UNIVERSITÉ  
— PARIS — EST



École d'architecture  
de la ville & des territoires  
à Marne-la-Vallée



**ENSG**  
Géomatique

**ESIEE**  
PARIS



**IFSTAR**

**UP**  
**EM**  
UNIVERSITÉ  
PARIS-EST  
MARNE-LA-VALLÉE

Our future university comes to life

Gustave Eiffel University, a pioneering and unique model in France, January 1, 2020