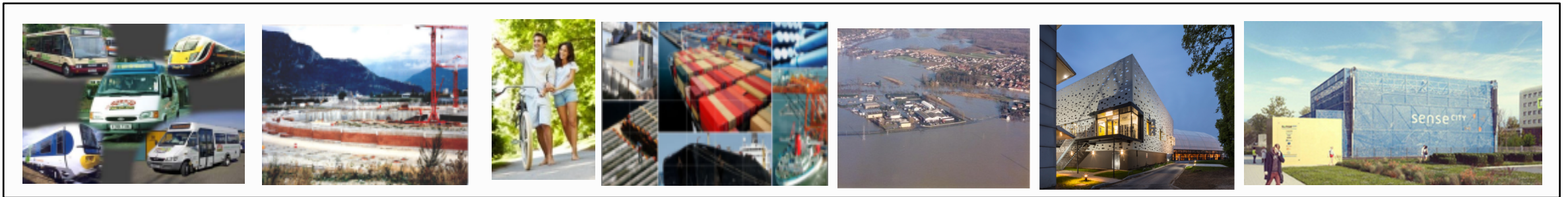




2020, January 1st

The creation of the University Gustave Eiffel

Presented by Dr Helene Jacquot-Guimbal (Ifsttar)
TRB, 2019, Washington, DC



The context

- National call for initiative in the education and research sector, international jury
- Spread of workforce force and small structures at the international scale
- Major challenges in sustainable cities
- **Ifsttar part of the selected consortium together with 5 partners: New concept of National university with regional campus**



- **Our objective:** in 10 years becoming a major actor for the production of innovative and disruptive knowledge dealing with the complex urban challenges and the proposition of breakthrough solutions
 - A very high level of interdisciplinarity
 - A multiscale approach (from lab to field pilot)
 - An unique network of world class research infrastructure and platforms
 - Joint innovation in cooperation with societal and economic partners

Already partners for a long time ... close to each other in the Paris territory



Engineering school specialised in urban engineering (located in Paris City)

Engineering school specialised in geoinformation sciences

French national institute specialised in transport, planning, infrastructure and networks, civil engineering and natural risks
5 Regional implantations

Engineering school specialised in electronics, IT, data and networks, on-board systems, and network and production engineering



Éa
v&t

A multidisciplinary university

- 40% of students in science and technology,
- 25% in economics and management,
- 20% in the humanities and social sciences,
- 15% in art, literature and languages



Advanced national institute of architecture

A nationally deployed university and several campus and world class research facilities

Test track

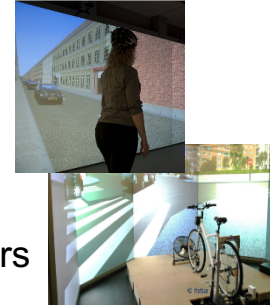


Rail Traffic Simulator (ERTMS)

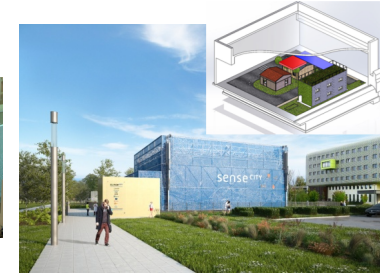
Lille-Villeneuve d'Ascq



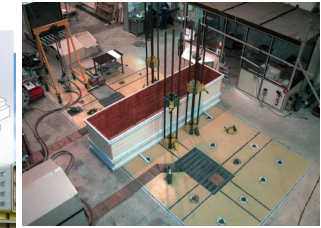
Instrumented cars



Simulators



Sense-City climatic chamber

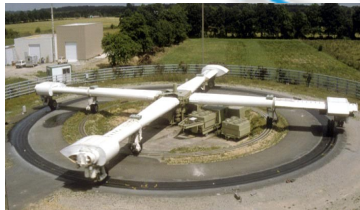


Vibration bench



Geotechnical centrifuge

Nantes



Pavement fatigue carousel (road traffic accelerator)

Versailles-Satory

Marne-la-Vallée



Strong floor for civil engineering structures

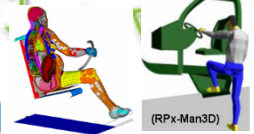


Materials testing laboratories:

Lyon-Bron



Instrumented vehicles



Human models

Marseille-Salon de Provence



Dummies



Transpolis test rig

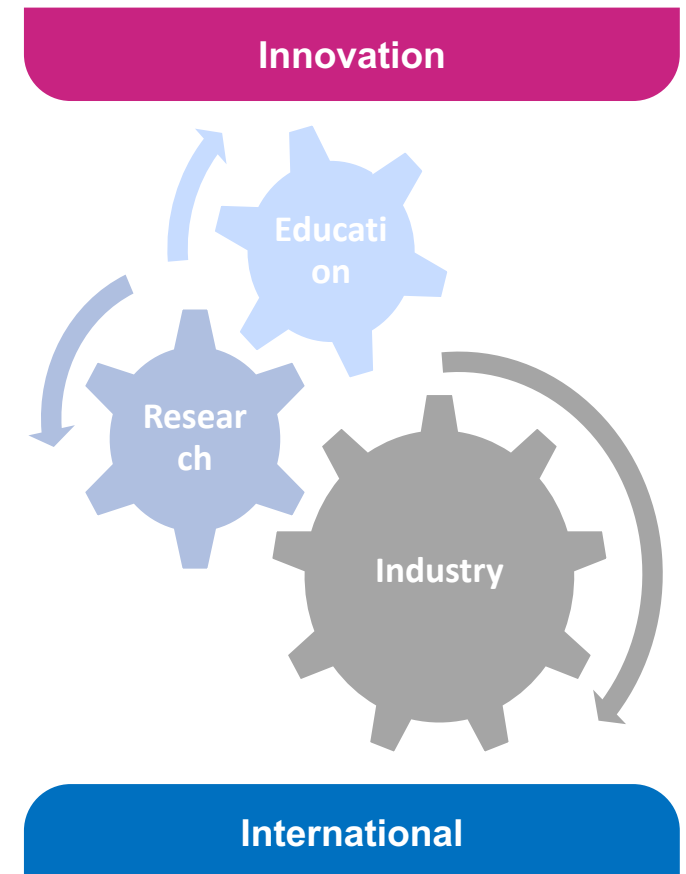
Key figures of the University Gustave Eiffel

- **15,200** students
- **8,000** undergraduates (**40 %** of them on vocational or apprenticeship programs)
- **6,700** Masters students (**30%** of them on vocational or apprenticeship programs)
- **530** PhD candidates
- **1,250** academic staff **490** of them full-time researchers
- **485** teaching/research staff
- **275** teachers
- **1,300** administrative and technical staff



International activities of the Gustave Eiffel University

- **Networks:**
 - Strategic/political
 - Research based
 - Education
- **Partnerships:**
 - MoUs, International associated laboratories , campus
- **International teaching programmes and trainings**
 - Mobilities of students and teachers
 - Foreign offices and training facilities
 - Launch the Institute of Advanced Urban studies
 - International Implantation & partners (campus F'SATI in South Africa)
- **Actions for transversality**
 - Multi partnership projects
 - Clusters: industry, Start-ups, Incubators, Government, Strategy



Bruxelles office main actions



- Strategic and informative benchmark
- Presence to strategic events and conferences in Brussels
- Contribution to the European strategy of members,
- Concerted lobbying, networking, answers to EC public consultations
- Pooling of expertise between CLORA members
- Promotion of member's expertise at European level

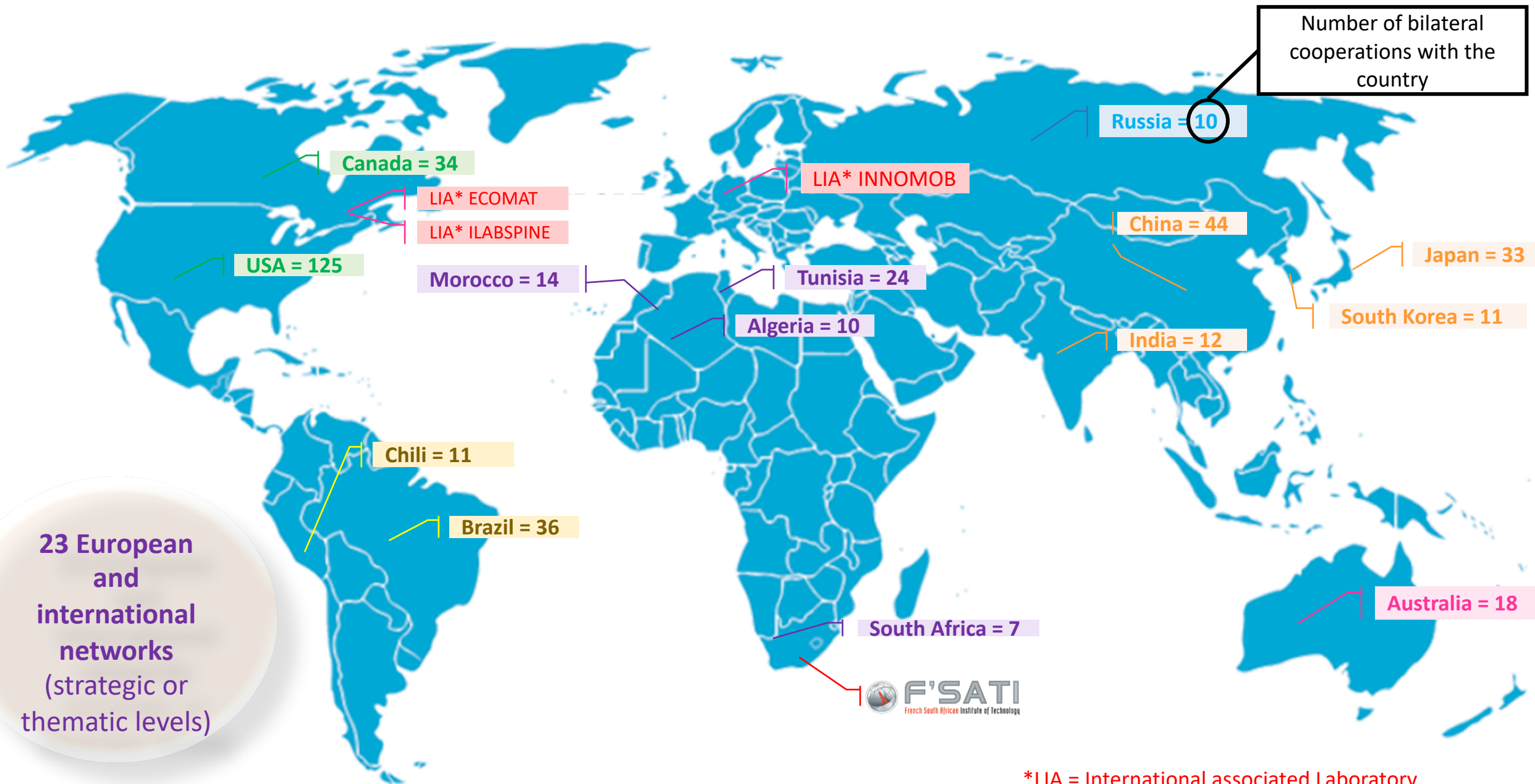


CLORA premium members
Permanent staff

Some present European cooperations



Some present international cooperations



To sum up

- By January 2020, Ifsttar will be called ***Gustave Eiffel University (Université Gustave Eiffel)***
- Ifsttar's Research topics and expertise will remain active
- Ifsttar's international and European cooperation will remain active
- New cooperation will be possible:
 - Mobility of master students (ERSAMUS+...)
 - International courses, training

We will continue to enjoy collaborations with you !

Board of Directors :

Prof Gilles Roussel (UPEM)

Dr Jean Mairesse (ESIEE)

Dr Helene Jacquot-Guimbal (IFSTTAR)

Dr Amina SELLALI (EAVT)

Dr Nicolas PAPANODITIS (ENSG)

Dr Franck JUNG (EIVP)

www.future-isite.fr/

